

Untitled (Invitation). 1967. Fabric, plexiglass, cork, synthetic polymer tubing, fiber-cement board, metal, plywood, electric wire, and ballpoint pen on printed paper 9 3/4 x 8 1/4" (24.8 x 21 cm). The Museum of Modern Art, New York. The Judith Rothschild Foundation Contemporary Drawings Collection Gift (purchase, and gift, in part, of The Eileen and Michael Cohen Collection). © 2012 Estate of Alighiero Boetti / Artists Rights Society (ARS), New York / SIAE, Rome



Pencil on paper on canvas 39 1/8 x 50" (99.4 x 127 cm). The Museum of Modern Art, New York. The Judith Rothschild Foundation Contemporary Drawings Collection Gift. © 2012 Estate of Alighiero Boetti / Artists Rights Society (ARS), New York / SIAE, Rome.

Game Plan

Alighiero Boetti

► Images Courtesy of MoMA, NY

José Antonio Simón ▶

This Machine Kills Tweets

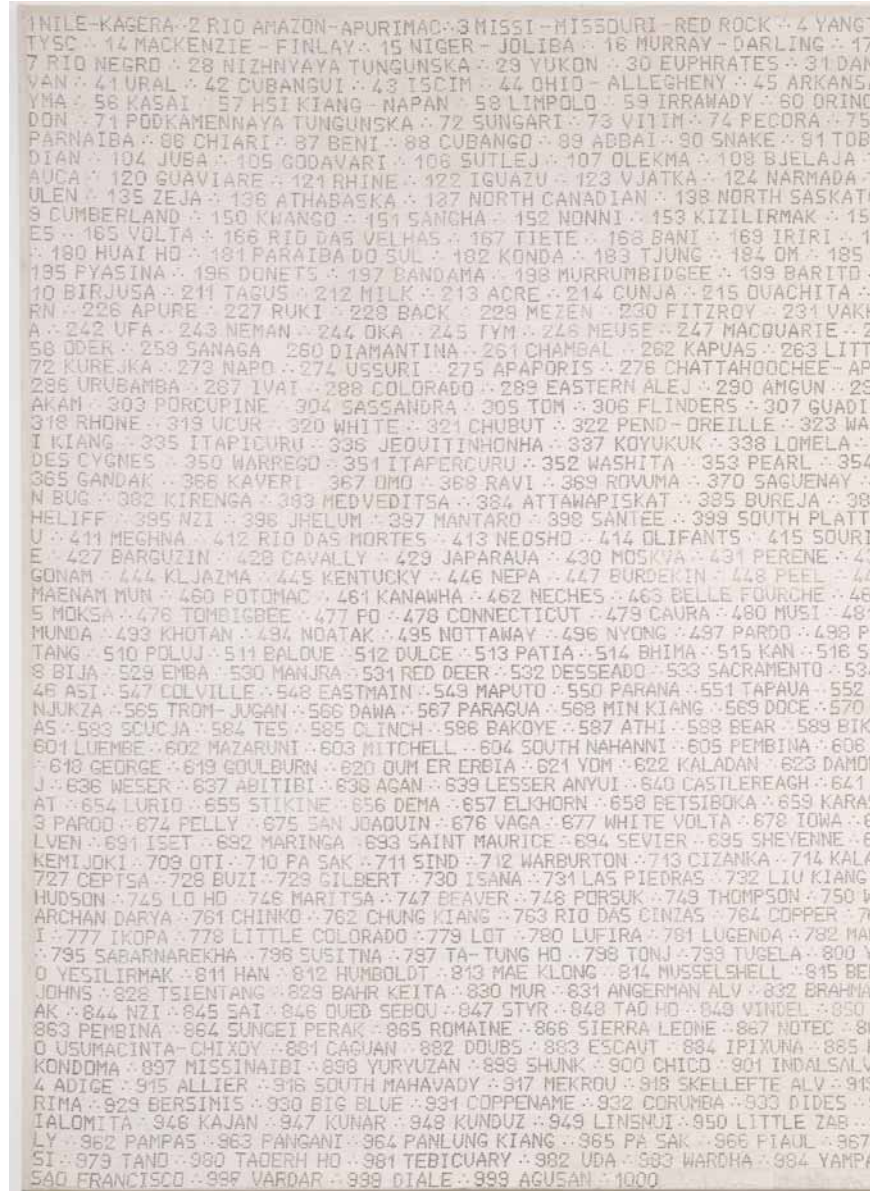
Many a thinker has denounced the dangers of thinking in 140 characters, mostly relating it to productivity and concentration in the work place. I am adding this idea and my concerns to the realm of visual arts. The reason is that modern/non-representational art has always faced the challenge of convincing newcomers, or lay people, of its legitimate purpose. Modern artists seem to be walking in the footsteps of the old philosophers, and yet, it seems they are still perceived as esoteric or elitist because no one thinks to understand them. One often sees people in museums looking from the painting to the author's label, back to the painting, as if searching for that one thought or tweet that will unlock the meaning behind the work.

It's not there.

Why? Because if things do not have a cost, they can never have value. It is the job of the philosophizing artist to impregnate their work with ideas and meaning rather than to write them down on paper. This seems so at odds with the current state of the world in which it is thought that, not only mass access to information be easy, but it should be instantaneous. Enter Alighiero Boetti; or better yet, Alighiero and Boetti. As one of the most important figures of the Arte Povera movement, Boetti is well versed in enriching mundane objects with ripe ideas. His art is the perfect example of this point, as it is the ultimate expression of art as a medium for ideas and perspective in its lacking of technical achievement or craftsmanship. The artist's work is especially compelling when his several periods are displayed together, as the several stages of his work keep in the same pattern each individual piece to convey: the duality of things. That the world manifests two, opposing forces is an idea that is quite old, but what truly resonates about his oeuvre is that the art, like many of its contemporaries, requires analysis and comparison. These are the tools that society is built on; it is how we can discern patterns, and thus meaning.

A joint venture with London's Tate Modern, Madrid's Reina Sofia a retrospective of Boetti's works is currently displayed in New York's Museum of Modern Art. The exhibition celebrates the material diversity, conceptual complexity, and visual beauty of Boetti's work, bringing together his ideas about order and disorder, non-invention, and the way in which the work addresses the whole world, travel, and time, proving him to be one of the most important and influential international artists of his generation.

A brief moment of continual thought opens worlds for the viewer. Compare, for example, two works: the first is *Rosso Gilera 60 1232/ Rosso Guzzi 60 1305*, created in 1967, and the second is *16 Dicembre 2040–11 Luglio 2023* (December 16, 2040–July 11, 2023), woven in Kabul, Afghanistan, in the year 1971. Visually one can discern a clear pattern; both consist of two panels, placed side by side that display information. The first work has the name of the two shades of industrial red used by legendary motorcycle companies of Italy with which



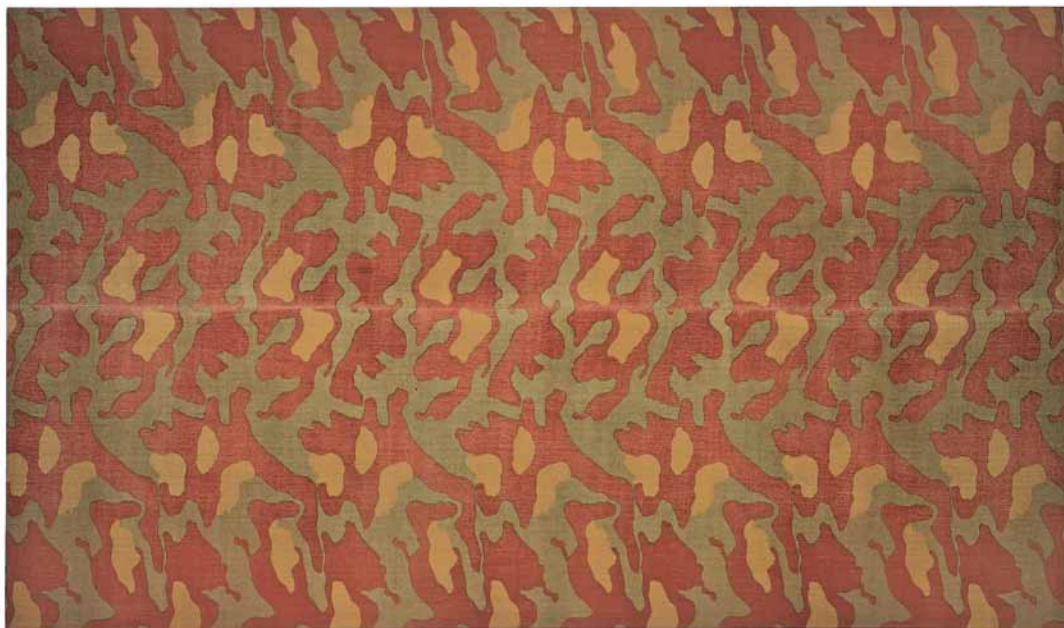
the panels are coated, the second shows the 100th anniversary of his birth alongside the predicted date of his death. Both can be called portraiture, both can be deceptively simple and both are a finger that point to different directions. These works signal the viewer to look at the role of industry in how we experience the world and to ponder life and death; both significant topics presented in a seemingly beautiful medium that wouldn't suggest the messages they are pregnant with.

Without wood, glass and an electrical device, the work Ping Pong, (1966), couldn't exist, nor could the ping without the pong, nor could the art without the observer, nor perspective without thought, nor the idea without a mind.

As the MoMA itself put it "The exhibition brings together these and other works related to travel, geography, and mapping, many of which relate to his extensive travels to Afghanistan, where he operated the One Hotel from 1971 until the Soviet invasion in 1979. During this period, Boetti began working with local artisans to produce embroideries such as the *Mappas* (maps), *Arazzi* (word squares), and *Tuttos* (literally, "Everything")."

1 ZI KIANG · 2 JENISE · 3 SELENGA · 4 HUANG HO · 5 RIO PARANA · 6 FLATA · 7 CONGO · 8 LUALABA · 9 MEKONG · 10 AMUR · 11 ARGUN · 12 LENA · 13 OB · 14 KATUM · 15 IR VOLGA · 16 JURIA · 17 PURUS · 18 MADEIRA · 19 ZAMBEZI · 20 BRAHMAPUTRA · 21 INDUS · 22 RIO SAO FRANCISCO · 23 ST LAWRENCE · 24 RIO GRANDE · 25 RUBE · 26 SYRDARYA · 27 SALWEEN · 28 GANGES · 29 VILJUJ · 30 TOCANTINS · 31 ARAGUAIA · 32 AMU DARYA · 33 RIO PARAGUAY · 34 NELSON · 35 SASKATCHEWAN · 36 DNIEPER · 37 ALBAN · 38 OLENEK · 39 COLORADO · 40 ORANGE · 41 TAPAJOS · 42 JAPURA · 43 TARIM · 44 YARKAND · 45 RED · 46 ATCHAFALAYA · 47 KOLIM · 48 KAMA · 49 SALADO DEL NORTE · 50 COLUMBIA · 51 XINGU · 52 INDIGIRKA · 53 MAMORE · 54 WABE · 55 SHEBELE · 56 URUGUAY · 57 UPPER MISSISSIPPI · 58 GUADALUPE · 59 MURRAY · 60 PUTUNAYO · 61 SENEGAL · 62 SIANG KIANG · 63 SONG KUI · 64 CULYM · 65 TIGRIS · 66 UPPER JENISEJ · 67 UPPER MURRAY · 68 KOLIM · 69 KET · 70 RUKI · 71 CHURCHILL · 72 PLATTE · 73 PILCOMAY · 74 MAGDALENA · 75 KURA · 76 OKA · 77 PECOS · 78 LACHLAN · 79 AMGA · 80 CANA · 81 LIAO HO · 82 COLORADO · 83 COOPER CREEK · 84 VAAL · 85 BRANCO · 86 BRAZOS · 87 TENNESSEE · 88 JUMNA · 89 FRASER · 90 TAVDA · 91 NORTHERN DVINA · 92 BENOUE · 93 DESNA · 94 HUALLAGA · 95 GEORGINA · 96 ATBARA · 97 KISTINA · 98 LOMAMI · 99 YALUNG KIANG · 100 KER CHEWAN · 101 LIARD · 102 URS · 103 AWASH · 104 CHENAB · 105 DESAGUADERO · 106 HAN KIANG · 107 JAVARI · 108 JUTAI · 109 OGOUE · 110 SANKURU · 111 MARJA · 112 KANSAS · 113 GREEN · 114 ELBE · 115 CHINDWIN · 116 DEMJANKA · 117 WHITE · 118 RIO NEGRO · 119 SIANG KIANG · 120 TRINITY · 121 MARJA · 122 HARI RUD · 123 KIEN KIANG · 124 MADRE DE DIOS · 125 SAO MANUEL · 126 VICEGDA · 127 CIMARRON · 128 OTTAWA · 129 UAUPE · 130 AMADYR HAI · 131 HUTU · 132 MAJA · 133 VISTULA · 134 VACJUGAN · 135 YELLOWSTONE · 136 ARAKS · 137 VICEGDA · 138 BOLSOJ JUGAN · 139 BERMEJO · 140 GAMBIA · 141 ZOO META · 142 KWILI · 143 RIO GRANDE · 144 CUANGO · 145 TURA · 146 MOBILE · 147 ALABAMA · 148 WESTERN DVINA · 149 LOIRE · 150 GILA · 151 LOGONE · 152 PARNATIBA · 153 TROMBETAS · 154 WU KIANG · 155 BAHR SALAMAT · 156 ARUWIMI · 157 CHAD PHRAYA · 158 DOCE · 159 HOPER · 160 ALBANY · 161 SEVE · 162 TISZA · 163 QUANTA · 164 ESSEQUIBO · 165 CHAGHARA · 166 HAMILTON · 167 KAFUE · 168 KIALING KIANG · 169 MOLOPO · 170 SANTIAGO · 171 TANAN · 172 DNON · 173 CUNENE · 174 ALESSANDRO · 175 SAVA · 176 DUBANNI · 177 CARONI · 178 LUVUA · 179 LUAPULA · 180 BIGHORN · 181 WIND · 182 SABINE · 183 EBRO · 184 MISSOURI · 185 NANI · 186 ANAMBAR · 187 PARANAPANEMA · 188 SARYUS · 189 TEFE · 190 DIGUL · 191 KUSHOKWIN · 192 VETLUGA · 193 KOKSOAK · 194 KANTAPIKAV · 195 ALACHICOLA · 196 FIMI · 197 LULLA · 198 LULLA · 199 RED RIVER OF THE NORTH · 200 KUBAN · 201 BARWON · 202 KAN KIANG · 203 KOK SOAK · 204 WEI HO · 205 CARA · 206 NEGRO · 207 HAY · 208 MURGAB · 209 CHEYENNE · 210 MAHANATHI · 211 NAMOI · 212 MORKOKA · 213 SURA · 214 COPPERMINE · 215 HILOK · 216 JACUI · 217 ANA · 218 FORT GEORGE · 219 ARACA · 220 CUIABA · 221 SAKARYA · 222 NORTH SOSVA · 223 JUDOMA · 224 CUMYS · 225 EASTMAIN · 226 LULONGA · 227 JACUI · 228 TARA · 229 LINDE · 230 APALICHICOLA · 231 CONA · 232 ARINDOS · 233 BATANGHARI · 234 CURARAY · 235 DZABKHAN · 236 FISH · 237 GUMTI · 238 HE · 239 LUANGWA · 240 HEN KIANG · 241 NODOS · 242 PARANAIBA · 243 PARU · 244 PRIPET · 245 TANA · 246 THELON · 247 NUJUA · 248 SAL · 249 OSAGE · 250 MARAIS · 251 SOKOTO · 252 INIRIDA · 253 BEFI RUD · 254 POWDER · 255 SEINE · 256 KOOTENAI · 257 CHUSOVAYA · 258 UERO · 259 CIKOJ · 260 GASCOYNE · 261 CONDE · 262 SAINT FRANCIS · 263 SMO · 264 WABASH · 265 WINNIPEG · 266 MURES · 267 KARUN · 268 ABUNA · 269 BAHR AOUK · 270 KOTTO · 271 BALSAS · 272 SOUTHERN · 273 GUADALUPE · 274 STU SHUI · 275 TZUSHUI KIANG · 276 PARU DO OESTE · 277 KOCECUMO · 278 SUSQUEANNA · 279 RIO VERDE GRANDE · 280 KAZAN · 281 OUED C · 282 BOGAN · 283 MURAT · 284 REPUBLICAN · 285 COURANTYNE · 286 DRAU · 287 GOTA · 288 INNOKO · 289 JAGUARIBE · 290 KEBBI · 291 MARONI · 292 M'BOMO · 293 TAPTI · 294 UATOMA · 295 PRUT · 296 MUNA · 297 MANGOKY · 298 NUCES · 299 ITUXY · 300 NIARI · 301 INGODA · 302 MURCHISON · 303 YADKIN · 304 PEE DE · 305 VICHADA · 306 POEL · 307 SAINT JOHN · 308 NIORARA · 309 TZIPA · 310 WISCONSIN · 311 MEARIM · 312 TEKEZE · 313 ANDERSON · 314 FEN HO · 315 SALMON · 316 BOLSOJ IRTIZ · 317 BIR SIOUX · 318 GREATER ANYUI · 319 HARTBEEST · 320 USA · 321 YAGUI · 322 YAZOO · 323 MONOGAHELA · 324 ULTUL · 325 GWYDIR · 326 MUTAN HO · 327 INJA · 328 TAJAMURA · 329 GRANDE · 330 LOANGE · 331 KAZYM · 332 DELAWARE · 333 DES MOINES · 334 GUADALQUIVIR · 335 LICKING · 336 RAPTI · 337 GORIN · 338 SELEMDZA · 339 BOLSAJA HETA · 340 TIMPTON · 341 SOZH · 342 ARIPUANA · 343 CHICAPA · 344 CUITO · 345 GREAT FISH · 346 JASTAZA · 347 RAMU · 348 ROOSEVELT · 349 BABI · 350 SAN JUAN · 351 TATU KIANG · 352 VICTORIA · 353 WAMBA · 354 BAHR EL GHAZAL · 355 TURUHAN · 356 LOZVA · 357 SIT · 358 INJAJA · 359 KIKENE · 360 PARACATU · 361 BEPEZINA · 362 FALEM · 363 DUEME · 364 MIASS · 365 MINNESOTA · 366 SREPK · 367 SYLVA · 368 MOLODO · 369 CADGETS · 370 ROANDKE · 371 ILMPEJA · 372 CURUA · 373 BETWA · 374 KHILOK · 375 MLYMIA · 376 NIZNAJA BAIKA · 377 RUPERT · 378 SHWELT · 379 ATRATO · 380 PYSMA · 381 YGYATTA · 382 TONLE SAP · 383 YUNGTING HO · 384 MERCA · 385 SAMARA · 386 GAZIMUR · 387 GREEN · 388 ORTON · 389 ILIM · 390 PING · 391 ALLAH · 392 GLOMMA · 393 BOLSOJ SALIM · 394 MAHI · 395 SIRET · 396 KREINA · 397 WANGANGA · 398 GARONNE · 399 SABUN · 400 IK · 401 TEBENCIN · 402 TOMPO · 403 TORNE ALV · 404 ARGA · 405 SALA · 406 DZIDA · 407 TART · 408 CANIMA · 409 CAPANAPAR · 410 CONCHOS · 411 CORRIENTES · 412 CUYUNI · 413 FAFAN · 414 FOW · 415 RIO DEL FUERTE · 416 HAY · 417 JARI · 418 KINABATANGAN · 419 PENNER · 420 PIGUIRI · 421 RANGANGA · 422 SUNGEI REJANG · 423 SAO LOURENCO · 424 SEYHAN · 425 SILKA · 426 TAGUARI · 427 DLT · 428 NITSA · 429 VAGAJ · 430 ITIMBIRI · 431 DINDER · 432 LURID · 433 MOELLE · 434 PARAZIDA DO NORTE · 435 TIGRE · 436 AJ · 437 KIIJA · 438 TURTAS · 439 CARYS · 440 FORTESCUE · 441 SALINE · 442 GILJU · 443 JAMES · 444 KADUNA · 445 MOOSE · 446 PANGANGA · 447 SAN MIGUEL · 448 SHYOK · 449 CAJA · 450 SANGUE · 451 TOMO · 452 RUKAV · 453 INGULETS · 454 KAMCHATKA · 455 LOV · 456 UNZA · 457 WHITE · 458 KUMA · 459 MOND · 460 OSA · 461 STEWART · 462 MENDERES · 463 BLANCO · 464 ENGLISH · 465 ILEK · 466 KOBDO · 467 LUNI · 468 MANA · 469 MARNE · 470 MYINGE · 471 TSIRIBIINA · 472 MAIN · 473 FITZROY · 474 VERDIGRIS · 475 MALENKIJ JUGAN · 476 TANAMA · 477 BATHA · 478 BEAS · 479 CURUA · 480 DALA · 481 VORONEZ · 482 TUMEN · 483 KOVA · 484 YARI · 485 BOLSOJ PATOM · 486 ABAKAN · 487 AKHTUBA · 488 KUJA · 489 IJA · 490 INN · 491 IZHMA · 492 KABUL · 493 KASKASKIA · 494 JACUPE · 495 TUBA · 496 TUJ · 497 VILIYA · 498 SIDERTY · 499 COARI · 500 INDRAGIRI · 501 BOLSOJ TAP · 502 MOMBODO · 503 VELHO · 504 CARCARANA · 505 BUUR · 506 LOMELA · 507 MAPUERA · 508 SAN JUAN · 509 SAVANNAH · 510 VASA BARRIS · 511 JUCAR · 512 KENGA · 513 ARTIC RED · 514 BANAS · 515 MANICOUAGAN · 516 SARDA · 517 WESTERN BUG · 518 LEICHHARDT · 519 ALMA · 520 ATREK · 521 BAYOU BARTHOLOMEW · 522 BOMDOKANDI · 523 BOTOMA · 524 CALEDON · 525 CAPIBERIBE · 526 CHABENZI · 527 CH · 528 CORUBAL · 529 CROSS · 530 DONONAI · 531 ERKMAN · 532 GANALE DORYA · 533 GASH · 534 GONGOLA · 535 GUARICO · 536 GURUPI · 537 HAWKESBURY · 538 HAYES · 539 LEICU · 540 HAN · 541 HAN · 542 HUND · 543 CRD · 544 DNYHEE · 545 PARAGUACU · 546 PARDO · 547 PEH HO · 548 PEI KIANG · 549 PERIBONCA · 550 PUNQUE · 551 SALINE · 552 SAONE · 553 HING HO · 554 TENASSERIN · 555 MBAN · 556 SUNGEI PAHANG · 557 RIO SALADO BUENOS AIRES · 558 CANNONBALL · 559 CEYHAN · 560 DORDOGNE · 561 IPUT · 562 WINISK · 563 PEN · 564 LOBAYE · 565 EULLOD · 566 HUNTER · 567 CARINHANHA · 568 MOREAU · 569 PAUVINI · 570 SANGUE · 571 UME · 572 NECHAKO · 573 DRINA · 574 ELILA · 575 SAINT · 576 CANANA · 577 MAJES · 578 KOLIMBINE · 579 LULE ALV · 580 MORONA · 581 MOULOUYA · 582 OUAKA · 583 TUNDZA · 584 UDA · 585 CHARITON · 586 CHANDALAR · 587 NUSHAG · 588 BLACK · 589 PORTUGUESA · 590 SAN · 591 BAKER · 592 BARKA · 593 CHI MAEMAN · 594 DIYALA · 595 HORTON · 596 KOBUK · 597 LOA · 598 LOWA · 599 NAREW · 600 N'GONIE · 601 CURUCA · 602 AKOBO · 603 AUX OUTARDES · 604 BURNETT · 605 HARTZ · 606 KALIX · 607 LARCH · 608 MU · 609 PARBATI · 610 DU APPELLE · 611 SNOWY · 612 TIBAGI · 613 KALIX ALV · 614 LIMAY · 615 LJUSNAN · 616 MOMBODO · 617 SAN JAVIER · 618 VENTUARI · 619 TALLAPOOSA · 620 MOLDAU · 621 SAAL · 622 DASHT · 623 GASCONADE · 624 RAHAD · 625 MANANARA · 626 ALSEK · 627 GAUJA · 628 GWAAI · 629 HUNYANI · 630 MORONA · 631 NORMAN · 632 OYAPOCK · 633 SABARI · 634 TAGIL · 635 SLAVE · 636 WEST FORK OF WHITE RIVER · 637 SOMES · 638 TIBER · 639 MACLEAY · 640 AB · 641 I · 642 DIZ · 643 AGUANAVAL · 644 ARAGUARI · 645 BAITARANI · 646 SUNGEI BARAM · 647 BA · 648 DOLORES · 649 DUCK · 650 EREPECURU · 651 FRENCHMAN · 652 GURGUETA · 653 HAB · 654 HARI · 655 HARRICANAW · 656 HARUT RUD · 657 HULAN HO · 658 IACO · 659 LUANGINGA · 660 LUNG KIANG · 661 MAGALAKWIN · 662 MAJES · 663 MALAGARASI · 664 MEADE · 665 MOND · 666 MULENG HO · 667 NOWITNA · 668 NUANETSU · 669 DNILA · 670 RIET · 671 SABARMATI · 672 SAN PEDRO · 673 SARAMACCO · 674 SHIRE · 675 SONDR · 676 SPREE · 677 SULA · 678 SUWANNEE · 679 SWAKOP · 680 TAHUAMANU · 681 TAME · 682 SAN JOFFE · 683 KUM · 684 RATTIA · 685 GREATER CHEREMSHAM · 686 CLARENCE · 687 SMOKY · 688 STRUMA · 689 SVIYAGA · 690 TAEDONG · 691 VAM · 692 ZAB · 693

Tapestry of the Thousand Longest Rivers of the World, 1976-82. Embroidery on cotton and linen 8" 3" x 17" 7" (251.5 x 535.9 cm). The Museum of Modern Art, New York. Gift of Jo Carole and Ronald S. Lauder, Jeanne C. Thayer Fund, The Bernhill Fund, Patricia Phelps de Cisneros Fund, Agnes Gund, and Barbara Jakobson Fund. © 2012 Estate of Alighiero Boetti / Artists Rights Society (ARS), New York / SIAE, Rome



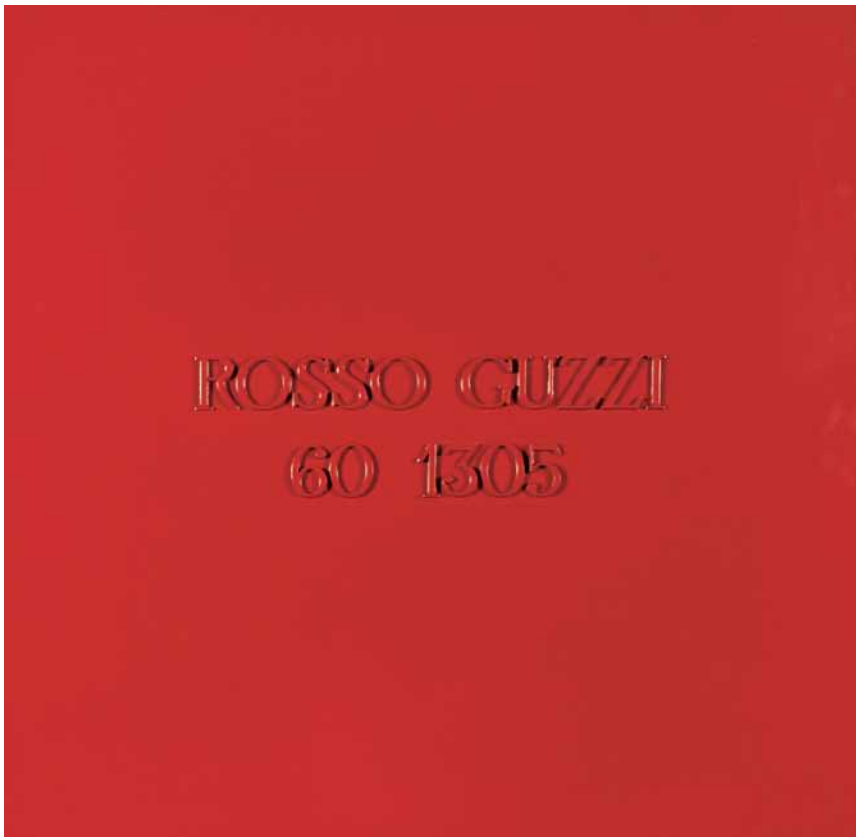
Printed fabric, 67 x 115" (170 x 291 cm), Glenstone, © 2012 Estate of Alighiero Boetti / Artists Rights Society (ARS), New York / SIAE, Rome



Rosso Gilera, 60 1232/ Rosso Guzzi 60 1305, 1967. Industrial paint on metal in two parts Each panel: 39 3/8 x 39 3/8 inches. Private collection. © 2012 Estate of Alighiero Boetti / Artists Rights Society (ARS), New York / SIAE, Rome.



Aerei (Airplanes), 1983. Ballpoint pen on three sheets of paper on canvas 9 1/8 x 19 1/4" (23.2 x 48.9 cm). The Museum of Modern Art, New York. The Judith Rothschild Foundation Contemporary Drawings Collection Gift. © 2012 Estate of Alighiero Boetti / Artists Rights Society (ARS), New York / SIAE, Rome.



Rosso Gilera 60 1232/ Rosso Guzzi 60 1305, 1967. Industrial paint on metal in two parts Each panel: 39 3/8 x 39 3/8 inches. Private collection. © 2012 Estate of Alighiero Boetti / Artists Rights Society (ARS), New York / SIAE, Rome.



Mappa (Map), 1971-72. Embroidery on linen 78 3/4 x 141 3/4" (200 x 360 cm). Glenstone. © 2012 Estate of Alighiero Boetti / Artists Rights Society (ARS), New York / SIAE, Rome